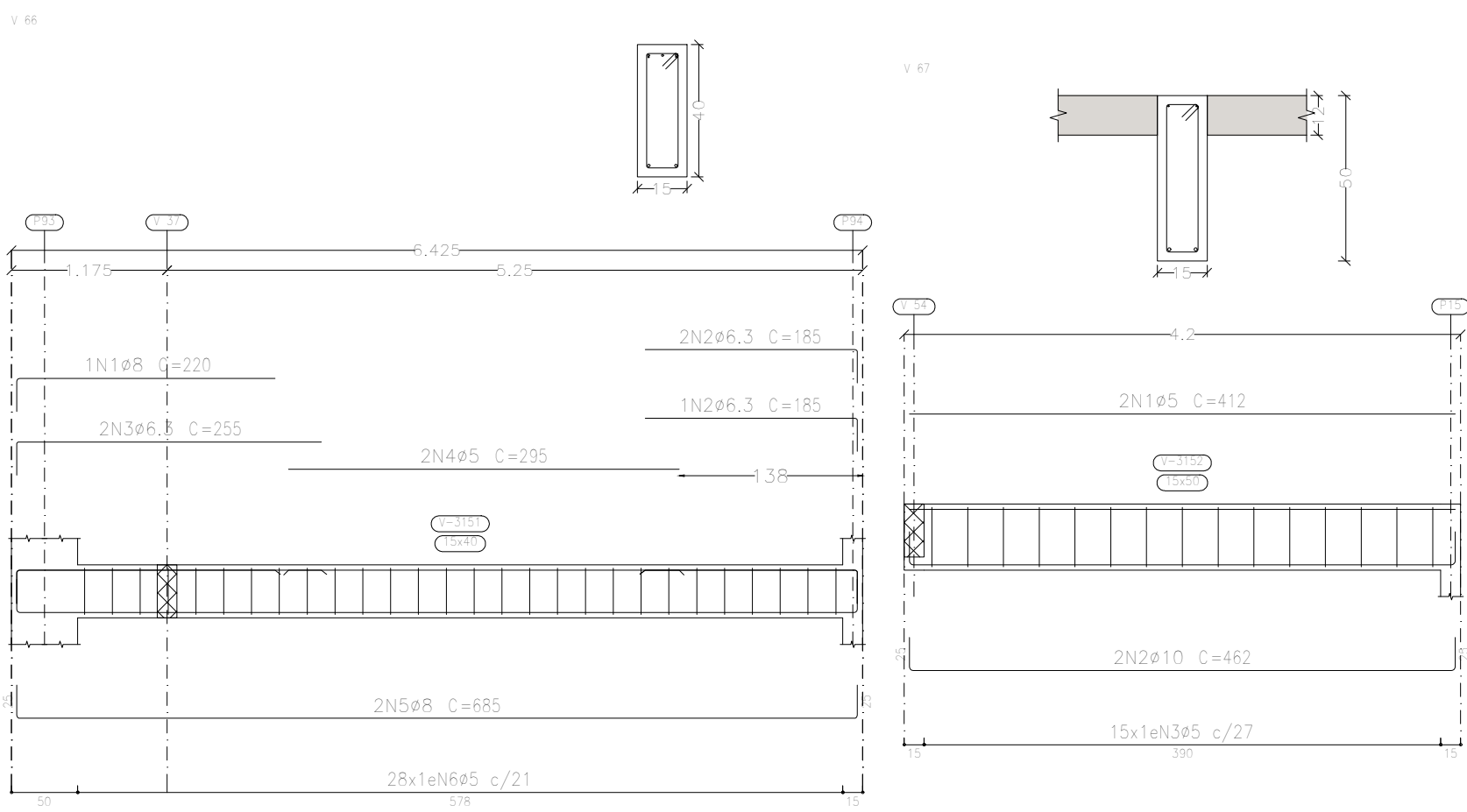
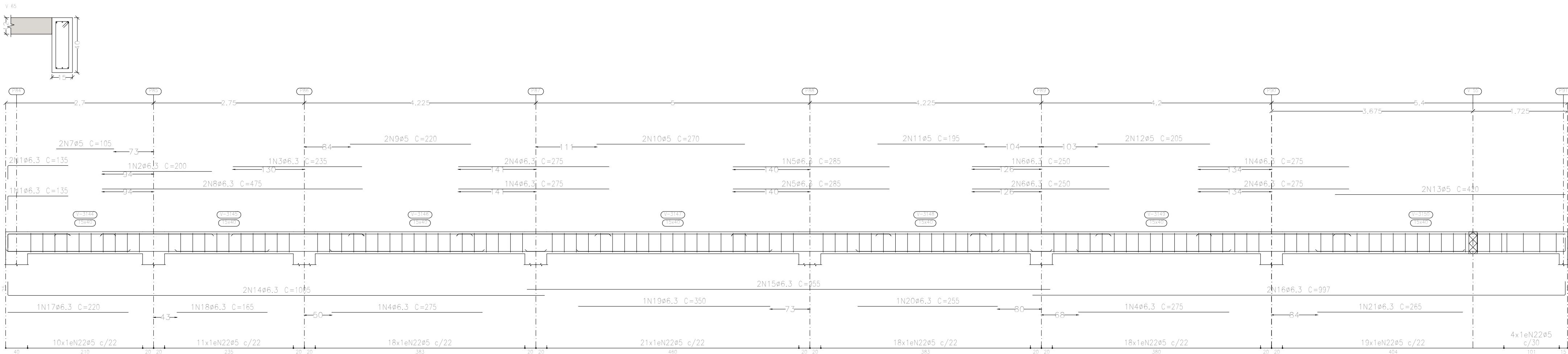
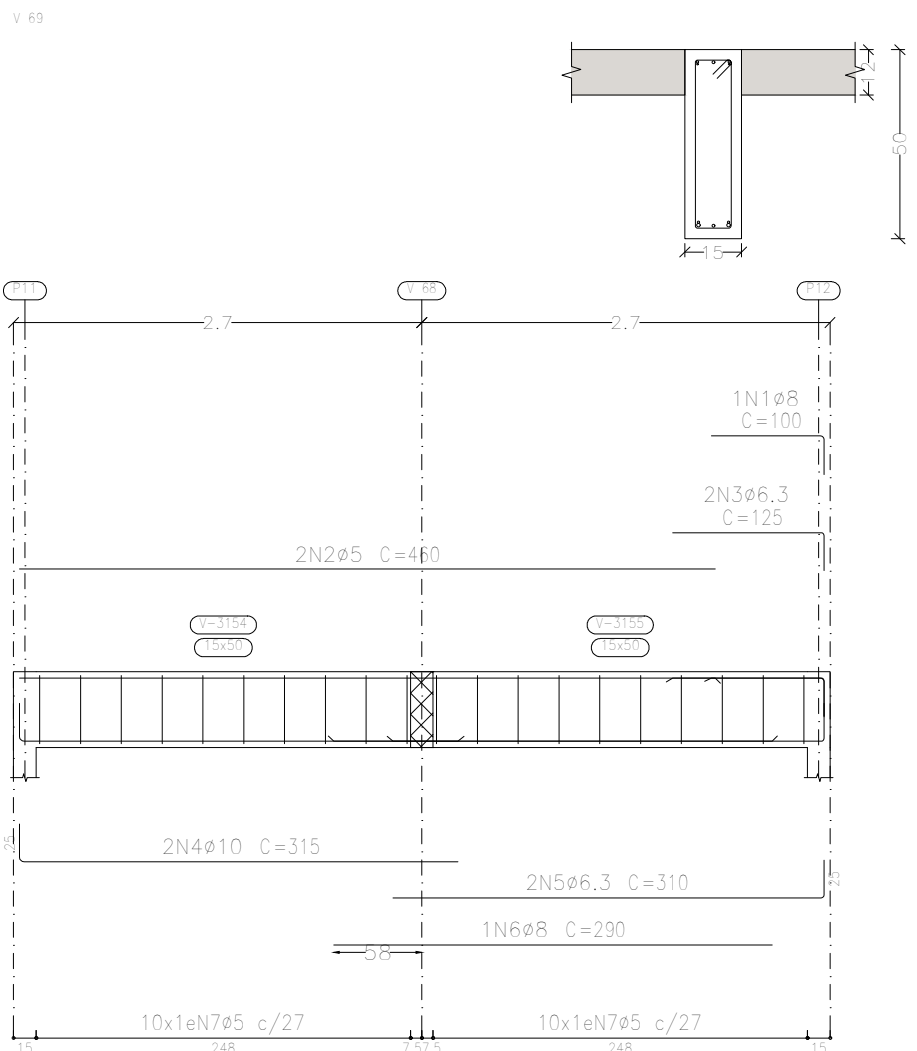
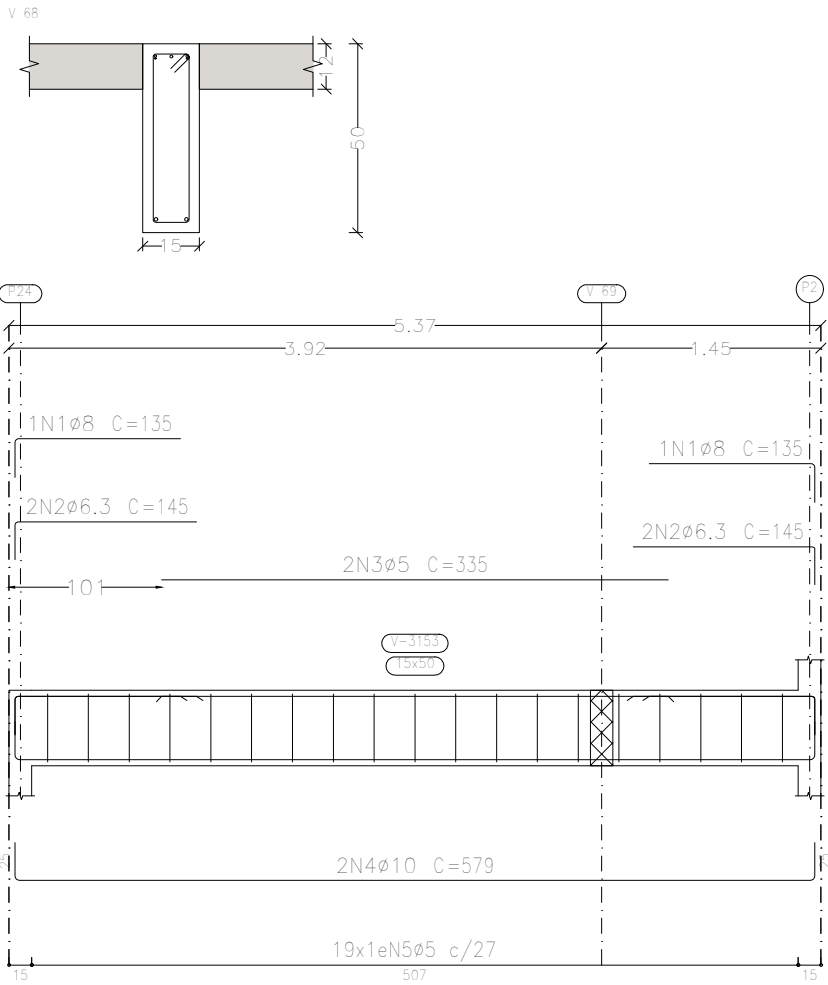
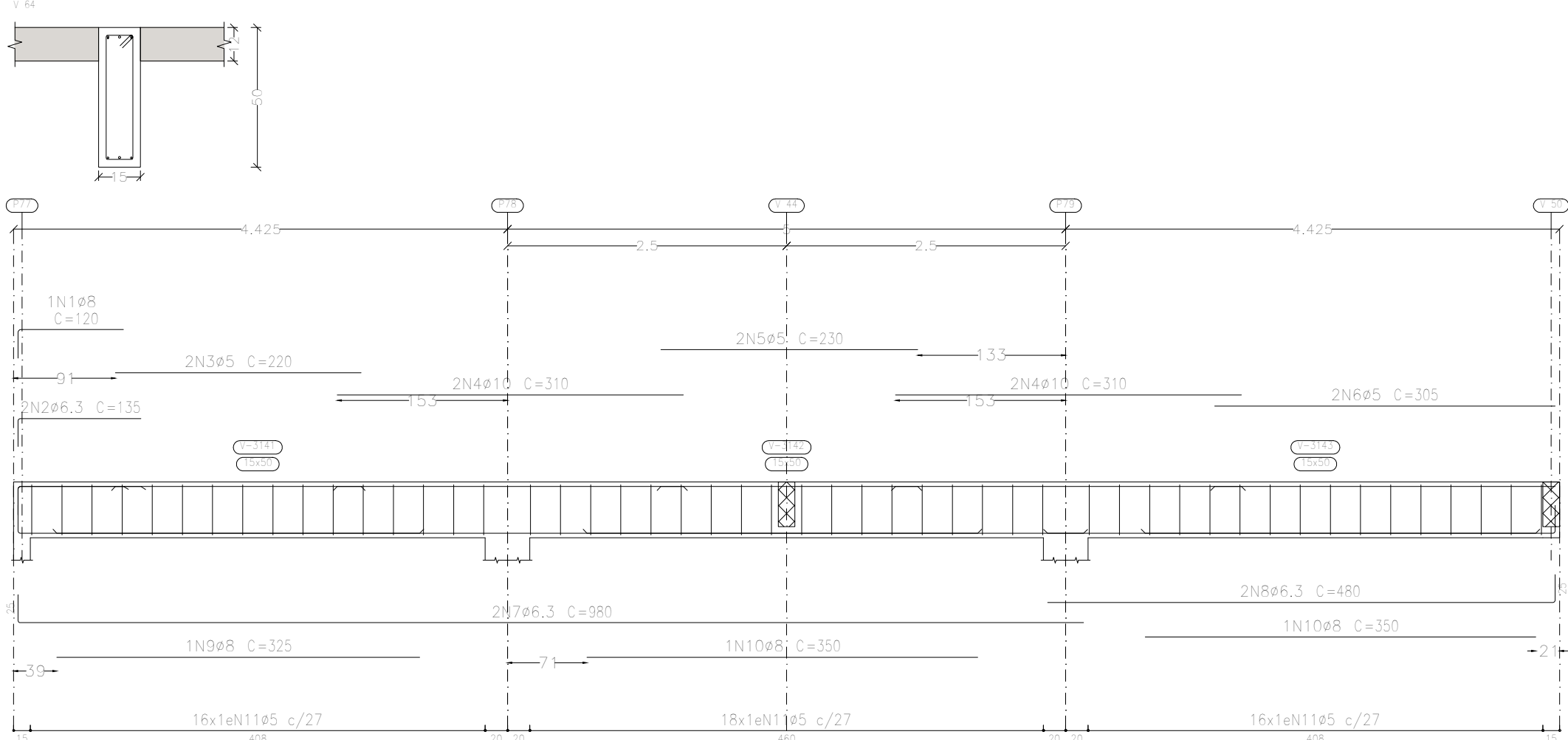


Piso 3
Desenho de vigas
Concreto: C25, em geral
Aço dos barras: CA-50 e CA-60
Aço dos estribos: CA-50 e CA-60
Escala vigas 1:50
Escala seções 1:20
Escala aberturas 1:20



Resumo Aço	Comp. total	Peso+10%	Total
CA-50	1896.3	511	
CA-60	2879.9	497	
Total			1211

Elemento	Pos.	Diam.	Q.	Esquema (cm)	Comp. (cm)	Total (cm)	CA-50 (kg)	CA-60 (kg)
V 64	1	ø8	1		120	120	0.5	
	2	ø6.3	2		135	270	0.7	
	3	ø5	2		220	440		0.7
	4	ø10	4		310	1240	7.6	
	5	ø5	2		230	460		0.7
	6	ø5	2		305	610		1.0
	7	ø6.3	2		980	1960	4.8	
	8	ø6.3	2		480	960	2.4	
	9	ø8	1		325	325	1.3	
	10	ø8	2		350	700	2.8	
	11	ø5	50		118	5900		9.3
Total+10%:							22.1	12.9
V 65	1	ø6.3	3		135	405	1.0	
	2	ø6.3	1		200	200	0.5	
	3	ø6.3	1		235	235	0.6	
	4	ø6.3	8		275	2200	5.4	
	5	ø6.3	3		285	855	2.1	
	6	ø6.3	3		250	750	1.8	
	7	ø5	2		105	210		0.3
	8	ø6.3	2		475	950	2.3	
	9	ø5	2		220	440		0.7
	10	ø5	2		270	540		0.8
	11	ø5	2		195	390		0.6
	12	ø5	2		205	410		0.6
	13	ø5	2		420	840		1.3
	14	ø6.3	2		1005	2010	4.9	
	15	ø6.3	2		955	1910	4.7	
	16	ø6.3	2		997	1994	4.9	
	17	ø6.3	1		220	220	0.5	
	18	ø6.3	1		165	165	0.4	
	19	ø6.3	1		350	350	0.9	
	20	ø6.3	1		255	255	0.6	
	21	ø6.3	1		265	265	0.6	
	22	ø5	119		98	11662		18.3
Total+10%:							34.3	24.9
V 66	1	ø8	1		220	220	0.9	
	2	ø6.3	3		185	555	1.4	
	3	ø6.3	2		255	510	1.2	
	4	ø5	2		295	590		0.9
	5	ø8	2		685	1370	5.4	
	6	ø5	28		98	2744		4.3
Total+10%:							9.8	5.7
V 67	1	ø5	2		412	824		1.3
	2	ø10	2		462	924		5.7
	3	ø5	15		118	1770		2.8
Total+10%:							6.3	4.5
V 68	1	ø8	2		135	270	1.1	
	2	ø6.3	4		145	580	1.4	
	3	ø5	2		335	670		1.1
	4	ø10	2		579	1158	7.1	
	5	ø5	19		118	2242		5.5
Total+10%:							10.6	5.1
V 69	1	ø8	1		100	100	0.4	
	2	ø5	2		460	920		1.4
	3	ø6.3	2		125	250		0.6
	4	ø10	2		315	630	3.9	
	5	ø6.3	2		310	620	1.5	
	6	ø8	1		290	290	1.1	
	7	ø5	20		118	2360		3.7
Total+10%:							8.3	5.6
							ø5:	58.7
							ø6.3:	49.9
							ø8:	14.9
							ø10:	26.7
							Total:	91.4
								58.7

Complexo Municipal de Saúde	Data:	25/10/2023
Local:	Número de desenho:	
Avenida Júlio Campos, Quadra 03		
Complexo Municipal de Saúde	Escala:	Indicada
Eduardo Rompanelli Tosetto	Data:	25/10/2023
Engenheiro Civil		
Número do CREA:	1220503037	